



**ALASKA DIVISION OF HOMELAND  
SECURITY & EMERGENCY MANAGEMENT**  
**SITUATION REPORT**  
**25-016• January 16, 2025**



Toll-Free 1.800.478.2337

Anchorage Area 907.428.7000

SEOC 907.428.7100

<p><b><u>SEOC Preparedness Level</u></b> Level 1-Routine Operations</p>	<p><a href="http://ready.alaska.gov">http://ready.alaska.gov</a></p>	<p><b><u>National Terrorism Advisory System:</u></b>  <a href="#">Read the NTAS Bulletin here</a></p>
<p><b><u>Maritime Security (MARSEC)</u></b> Level:1- Minimum Appropriate Security Measures</p>	<p><b>WHO Novel Coronavirus Pandemic (COVID-19):</b> <a href="#">2019 Novel Coronavirus</a></p>	<p><b><u>Alaska Military Installation Force Protection</u></b>  <b><u>Level:</u></b> FPCON Bravo</p>

(Significant changes from previous situation reports are red.)

**Significant Issues:**

**West Coast Storm:**

Yesterday, the SEOC was notified that President Biden issued a Federal Major Disaster Declaration for Public Assistance (PA) for the 2024 West Coast Storm that includes Kotzebue and the Northwest Arctic Borough.

**Department of Health (DOH):**

For current information, see: <https://health.alaska.gov/dph/Pages/default.aspx>  
<https://health.alaska.gov/dph/Emergency/Pages/prepared/default.aspx>

**NTAS Bulletin:**

The U.S. Department of Homeland Security issued an updated National Terrorism Advisory Bulletin on May 24, 2023. The current and expired bulletins can be viewed at the below link.  
<https://www.dhs.gov/national-terrorism-advisory-system>

**Travel Alerts and Conditions:**

**Rabbit Creek Pedestrian Bridge over Seward Hwy and DeArmon Rd is CLOSED due to damage from high winds.**

For current driving conditions, dial 511 or visit: <https://511.alaska.gov/>

**Barry Arm Landslide / Tsunami Risk:**

For the latest information on the Barry Arm Landslide and Tsunami risk, click here:  
<https://dggs.alaska.gov/hazards/barry-arm-landslide.html>

**Earthquakes:**

United States Geological Service (USGS) Earthquake Information: <http://earthquake.usgs.gov/>  
National Tsunami Warning Center: <http://tsunami.gov/>

## Alaska Volcanoes:

**Great Sitkin** Alert Level: **Watch** and Aviation Color Code: **Orange**

**Mt. Spurr** Alert Level: **Advisory** and Aviation Color Code: **Yellow**

For Alaska Volcano updates, go to: <https://www.avo.alaska.edu/>

## Air Quality Index (AQI) Advisories:

For the most up-to-date Air Quality Index Advisories:

<http://dec.alaska.gov/Applications/Air/airtoolsweb/Home/Index>

## Spills of Oil and Hazardous Substances:

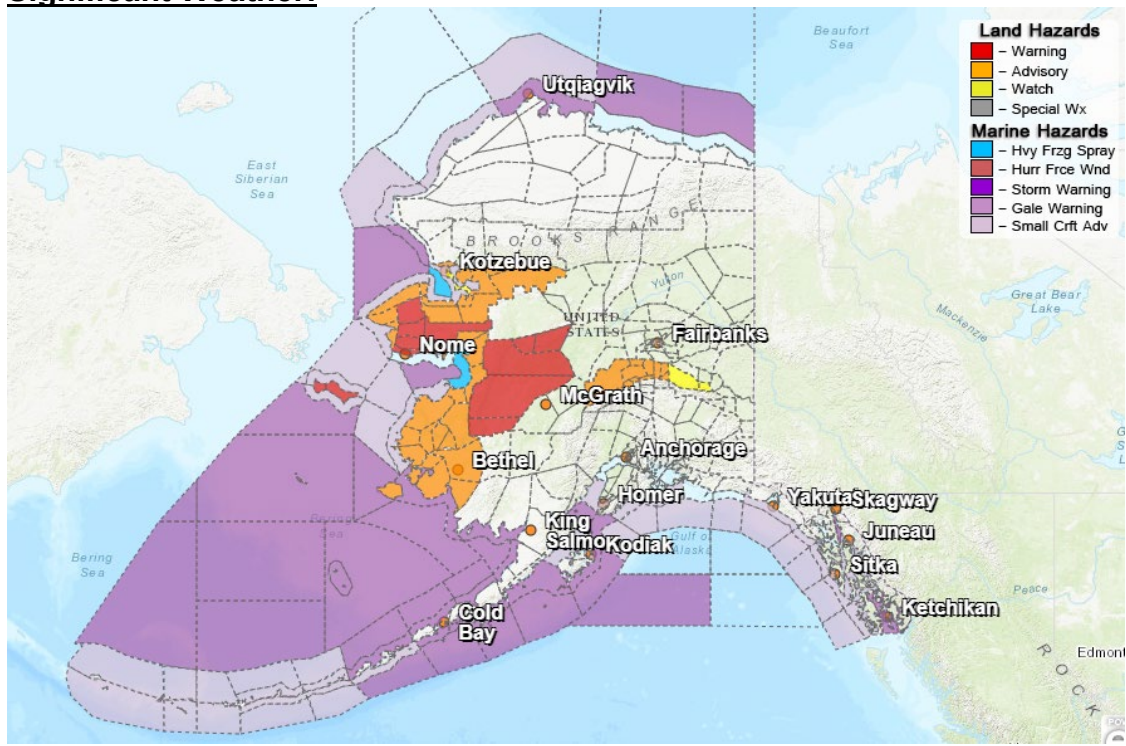
The Alaska Division of Environmental Conservation (ADEC) Spill Prevention and Response page is located at: <https://dec.alaska.gov/spar/>

## Alaska Cyber Security Information:

State Employees may sign up for cybersecurity notifications and alerts at:

<https://oit.alaska.gov/security>

## Significant Weather:



### **Winter Weather Advisory:**

Yukon Delta Coast and Lower Yukon River in effect from 6pm this evening to 9am Friday.

Lower Kobuk Valley, Northern Seward Peninsula, Upper Kobuk Valleys in effect from 9am Friday to noon Saturday.

Shishmaref, Bering Strait Coast, and Eastern Norton Sound and Nulato Hills in effect from 3am Friday to 3pm Saturday.

Kuskokwim Delta in effect from 4pm this afternoon to 6am Friday from Bethel West including Nunivak Island.

### **Winter Storm Watch:**

Baldwin Peninsula in effect from Friday morning through Saturday morning.

### **High Wind Watch:**

Eastern Alaska Range North of Trims Camp in effect from 9am Friday to noon Saturday.

**Wind Advisory:**

Northern Denali Borough in effect from 9am Friday to noon Saturday.

**Blizzard Warning:**

St Lawrence Island in effect from 3am to 6pm Friday.

**Winter Storm Warning:**

Middle Yukon Valley, Lower Yukon and Innoko Valleys in effect from 3am Friday to 9am Saturday.  
Southern Seward Peninsula Coast and Interior Seward Peninsula in effect from 3am Friday to 3pm Saturday.

**Coastal Flood Advisory:**

Kuskokwim Delta in effect from 9pm this evening to 4pm Saturday.

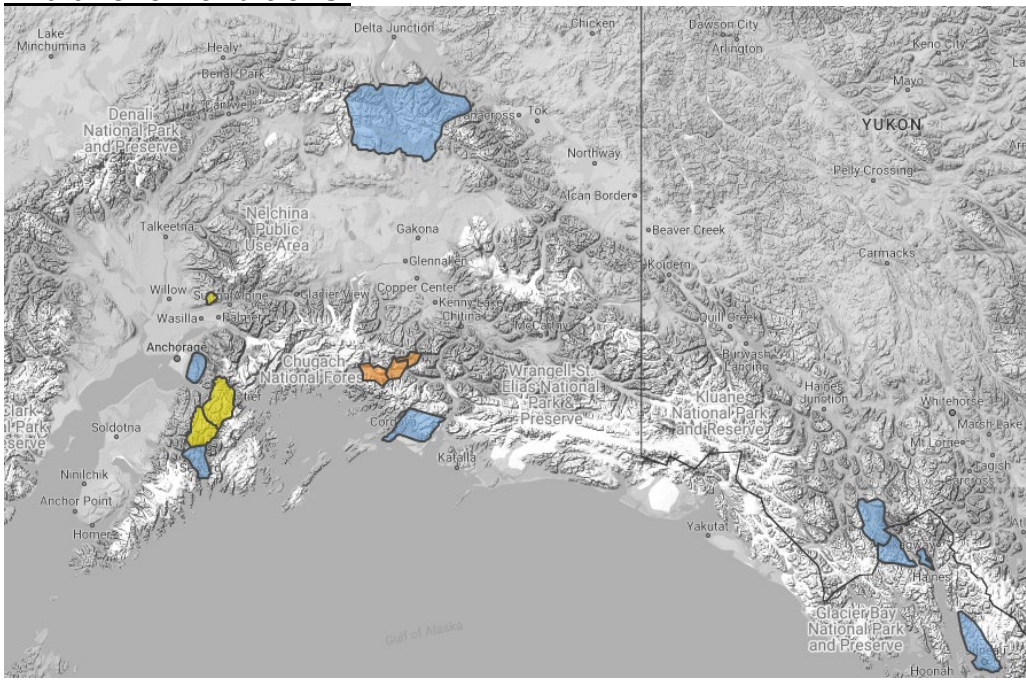
**Air Quality Alert:**

Fairbanks Metro Area in effect until 5pm today.

For more information and the most current Weather, Watches/Warning/Advisories go to:

<https://www.weather.gov/arh/>

**Avalanche Conditions:**



**Summit Lake** – Moderate above 2,500’.

**Turnagain Pass** – Moderate above 2,500’.

**Hatcher’s Pass** – Moderate above 2,500’.

**Maritime, Intermountain, and Continental** – Considerable above 2,000’.

For more information and the most current avalanche conditions, go to: <https://alaskasnow.org/>

**The Next Situation Report** will be on **January 17, 2025**. An interim report will be prompted by a significant change in the situation or the threat level. This report is posted on the internet at

<https://ready.alaska.gov/sitrep>.

To register for email distribution, **PLEASE** go to:

<http://list.state.ak.us/mailman/listinfo/dhsem.situation.report>.

Direct questions regarding this report to the SEOC at 907-428-7100 or [seoc@alaska.gov](mailto:seoc@alaska.gov).